



THE RITZ-CARLTON  
YACHT COLLECTION

# INTRODUCING THE YACHT EXPERIENCE

MAY 2022

# YACHT SPECIFICATIONS



624  
FEET  
(190 METERS)

25,400  
TONS

149  
SUITES

298  
GUESTS

246  
CREW

1 to 1.21  
CREW-TO-GUEST  
RATIO

1 to 85.2  
GUEST-TO-SPACE  
RATIO

# INTRODUCING *EVIRIMA*



SETTING SAIL IN 2022

MEANING: DISCOVERY; ORIGIN: GREEK

Evrima inspires travelers to immerse themselves in exceptional experiences, explore new destinations and foster the spirit of adventure

# BRAND VALUE



THE RITZ-CARLTON

The Ritz-Carlton inspires life's most meaningful journeys.

- AWARD-WINNING LUXURY HOTEL BRAND
- STRONG BRAND RECOGNITION GLOBALLY
- HOSPITALITY AT A GOLD STANDARD
- LEGENDARY PERSONALIZED SERVICE

# SERVICE



## SERVICE AT A GOLD STANDARD

Legendary service is provided by the Ladies and Gentlemen of The Ritz-Carlton, with almost one crew member for every guest.

- WARM
- SINCERE
- PERSONALIZED
- ANTICIPATORY

# ONE OF THE HIGHEST SPACE RATIOS AT SEA

Measuring 624 feet in length and accommodating no more than 298 guests, *Evrima* has one of the highest space ratios in luxury cruise, with **85.2 square feet of space per guest**.

CRUISE LINE	SHIP(S)	LENGTH (FT)	LENGTH (M)	TONNAGE	GUESTS	CREW	CREW-TO-GUEST RATIO	GUEST-TO-SPACE RATIO
RCYC	<i>Evrima</i>	624	190	25,400	298	246	1 to 1.2	1 to 85.2
REGENT	<i>Seven Seas Explorer</i>	735	224	55,254	750	552	1 to 1.4	1 to 73.7
CRYSTAL	<i>Crystal Serenity</i>	820	250	68,870	980	655	1 to 1.5	1 to 70.3
SILVERSEA	<i>Silver Muse</i>	698	213	40,700	596	411	1 to 1.5	1 to 68.3
SEABOURN	<i>Seabourn Encore, Ovation</i>	690	210	40,350	600	419	1 to 1.4	1 to 67.3

*The guest to space ratio divides the amount of ship space (gross registered tonnage) by the number guests. The higher the space ratio, the more space per person.*

# THE EXPERIENCE

Designed to combine the luxury lifestyle of The Ritz-Carlton with the casual freedom of a yachting vacation, The Ritz-Carlton Yacht Collection will offer itineraries at a relaxed pace and introduce guests to the local cultures of each destination through curated immersive experiences ashore.

ALL-INCLUSIVE VALUE

PERSONALIZED SERVICE OF  
THE RITZ-CARLTON®

MULTIPLE DINING  
EXPERIENCES, 24-HOUR IN-  
SUITE DINING, PLUS  
SPECIALTY DINING

ALL-SUITE  
ACCOMMODATIONS, EACH  
WITH PRIVATE TERRACE

UNIQUE MARINA-STYLE  
PLATFORM, DIRECT ACCESS  
TO WATER

VARIETY OF SOCIAL SPACES  
FOR RECEPTIONS &  
ENTERTAINMENT

RELAXED YACHTING PACE,  
OVERNIGHTS & DAYTIME  
PORTS OF CALL

CURATED, IMMERSIVE  
DESTINATION EXPERIENCES  
ASHORE

# ALL-INCLUSIVE VALUE



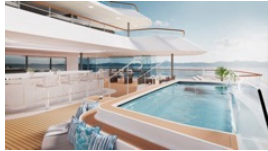
- LUXURY ALL-SUITE ACCOMMODATIONS
- MULTIPLE DINING EXPERIENCES, INCLUDING 24-HOUR IN-SUITE DINING
- BEVERAGES IN-SUITE AND THROUGHOUT THE YACHT
- ONBOARD ACTIVITIES AND ENTERTAINMENT
- ONBOARD GRATUITIES
- WI-FI

# EVIRIMA DINING EXPERIENCES

INCLUDED

OPEN SEATING

MISTRAL



TALAAAT NAM



THE POOL HOUSE



THE EVRIMA ROOM



LIGHT BITES

THE BAR



THE LIVING ROOM



THE MARINA TERRACE



24-HOUR IN-SUITE DINING



ADDITIONAL FEE

SPECIALTY\*

*\*Reservations required*

S.E.A.



DINING PRIVÉE



MISTRAL

MEDITERRANEAN INSPIRED

DECK 8





THE POOL HOUSE  
CASUAL VARIETY  
DECK 5



THE EVRIMA ROOM

LOCALLY INSPIRED

DECK 4









THE LIVING ROOM  
COFFEES AND PASTRIES  
DECK 4



THE MARINA TERRACE  
COCKTAILS AND LIGHT BITES  
DECK 3





# OUR SUITES

- 149 SUITES, EACH WITH PRIVATE OCEAN-VIEW TERRACE
- HIGHEST PERCENTAGE OF LARGER SUITES IN LUXURY CRUISING
- TWO OWNER'S SUITES, EACH WITH PRIVATE WHIRLPOOL
- LOFTS AND COMBINABLE SUITES WITH FLEXIBLE CONFIGURATION
- SUPERIOR GUEST AMENITIES



# SUITES AT A GLANCE

THE OWNER'S SUITE



SUITE: 1091 SQ FT | 101 SQ M  
TERRACE: 635 SQ FT | 59 SQ M  
QUANTITY: 2

THE VIEW SUITE



SUITE: UP TO 574 SQ FT | 53 SQ M  
TERRACE: UP TO 129 SQ FT | 12 SQ M  
QUANTITY: 4

THE LOFT SUITE



SUITE: 611 SQ FT | 57 SQ M  
TERRACE: 81 SQ FT | 7.5 SQ M  
QUANTITY: 12

THE GRAND SUITE



SUITE: 587 SQ FT | 55 SQ M  
TERRACE: UP TO 118 SQ FT | 11 SQ M  
QUANTITY: 14

THE SIGNATURE SUITE



SUITE: 429 SQ FT | 40 SQ M  
TERRACE: UP TO 118 SQ FT | 11 SQ M  
QUANTITY: 27

THE TERRACE SUITE



SUITE: 300 SQ FT | 28 SQ M  
TERRACE: UP TO 81 SQ FT | 7.5 SQ M  
QUANTITY: 90

# SUITE AMENITIES AND FEATURES

Wake up every morning relaxed and carefree in one of our 149 expertly appointed suites. Designed to combine the modern elegance of The Ritz-Carlton with the casual luxury of the world's most magnificent super yachts, our suites set a new standard for luxury travel.

PRIVATE OCEAN-VIEW  
TERRACE

DOUBLE VANITY  
BATHROOMS

ESPRESSO MACHINE  
WITH COMPLIMENTARY  
COFFEES AND TEAS

24-HOUR IN-SUITE  
DINING

COMPLIMENTARY WI-FI

LUXURIOUS CUSTOM  
KING BED SYSTEM AND  
LINENS

MINI-BAR PROVISIONED  
TO GUESTS'  
PREFERENCES

COMPLIMENTARY  
BOTTLE OF CHAMPAGNE  
UPON ARRIVAL

INDIVIDUAL ROBE AND  
SLIPPERS

ACCESS TO A PERSONAL  
CONCIERGE IN ALL SUITE  
CATEGORIES

THE OWNER'S SUITE

QUANTITY: 2

SUITE: 1091 SQ FT | 101 SQ M

TERRACE: 635 SQ FT | 59 SQ M



# THE VIEW SUITE

QUANTITY: 4  
SUITES 732-733

SUITE: 544 SQ FT | 51 SQ M  
TERRACE: 108 SQ FT | 10 SQ M

SUITES 734-735

SUITE: 574 SQ FT | 53 SQ M  
TERRACE: 129 SQ FT | 12 SQ M





# THE LOFT SUITE

QUANTITY: 12  
SUITE: 611 SQ FT | 57 SQ M  
TERRACE: 81 SQ FT | 7.5 SQ M



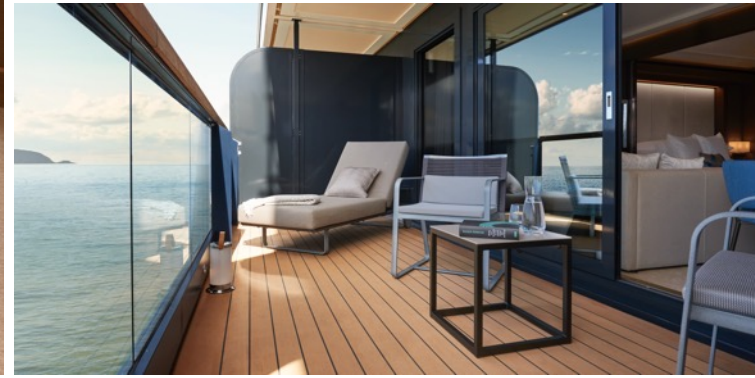
# THE GRAND SUITE

QUANTITY: 14  
SUITE: 587 SQ FT | 55 SQ M  
TERRACE 108-118 SQ FT | 10-11 SQ M



# THE SIGNATURE SUITE

QUANTITY: 27  
SUITE: 429 SQ FT | 40 SQ M  
TERRACE: 81-118 SQ FT | 7.5-11 SQ M



# THE TERRACE SUITE

QUANTITY: 90  
SUITE: 300 SQ FT | 28 SQ M  
TERRACE: 54-81 SQ FT | 5-7.5 SQ M



# CONNECTING AND CONVERTIBLE SUITES

All suites are designed for two (2) guests, but many can be connected to satisfy the needs of families or to appeal to meeting planners. An innovative system offers the flexibility to transform connecting suites into larger spaces by removing a panel of the wall.

All connecting suites include:

- An expanded private terrace
- Two (2) luxury custom king bed sleep systems
- Two (2) in-suite safes
- Two (2) double vanity bathrooms, each with a modern shower system
- Three (3) digital flat screen televisions
  - Two (2) in Terrace-to-Terrace configurations

Terrace-to-Grand (connected)



Terrace-to-Signature (convertible)



Terrace-to-Terrace (convertible)



# CONNECTING AND CONVERTIBLE SUITES

## INNOVATIVE WALL SYSTEM

Flexible configuration options allow connecting suites to expand to satisfy the needs of families to appeal to meeting planners seeking to provide similar accommodations for their top performers.

The opening measures 7.2 feet wide by 7.2 feet high (2.2 meters wide by 2.2 meters high).

## CONNECTING SUITES

Of the 149 suites on board, the connecting suites total 43 single-suite configurations. If all connecting suites are utilized as single-suite configurations, inventory reduces to 106 suites.

Select Terrace Suites (18 total) are convertible suites that can be configured as an extended living and dining area or remain a second bedroom when connected to the adjacent suite.

Three (3) combinations of suite categories are available for connecting suites:

Terrace-to-Terrace: 24 total (12 Convertible)

Terrace-to-Signature: 7 total (Three (3) Convertible)

Terrace-to-Grand: 12 total (Three (3) Convertible)

# THE MARINA

MULTI-FUNCTIONAL PLATFORM

DIRECT ACCESS TO THE WATER FROM DECK 3

COMPLIMENTARY WATERSPORTS DURING  
PORT DAYS WHILE AT ANCHOR\*

- PADDLEBOARDS
- WINDSURF BOARDS
- KAYAKS
- SAILBOATS
- SNORKELING ACCESSORIES

*\*Weather and local authorities permitting*





# PUBLIC SPACES

THE POOL  
DECK 5



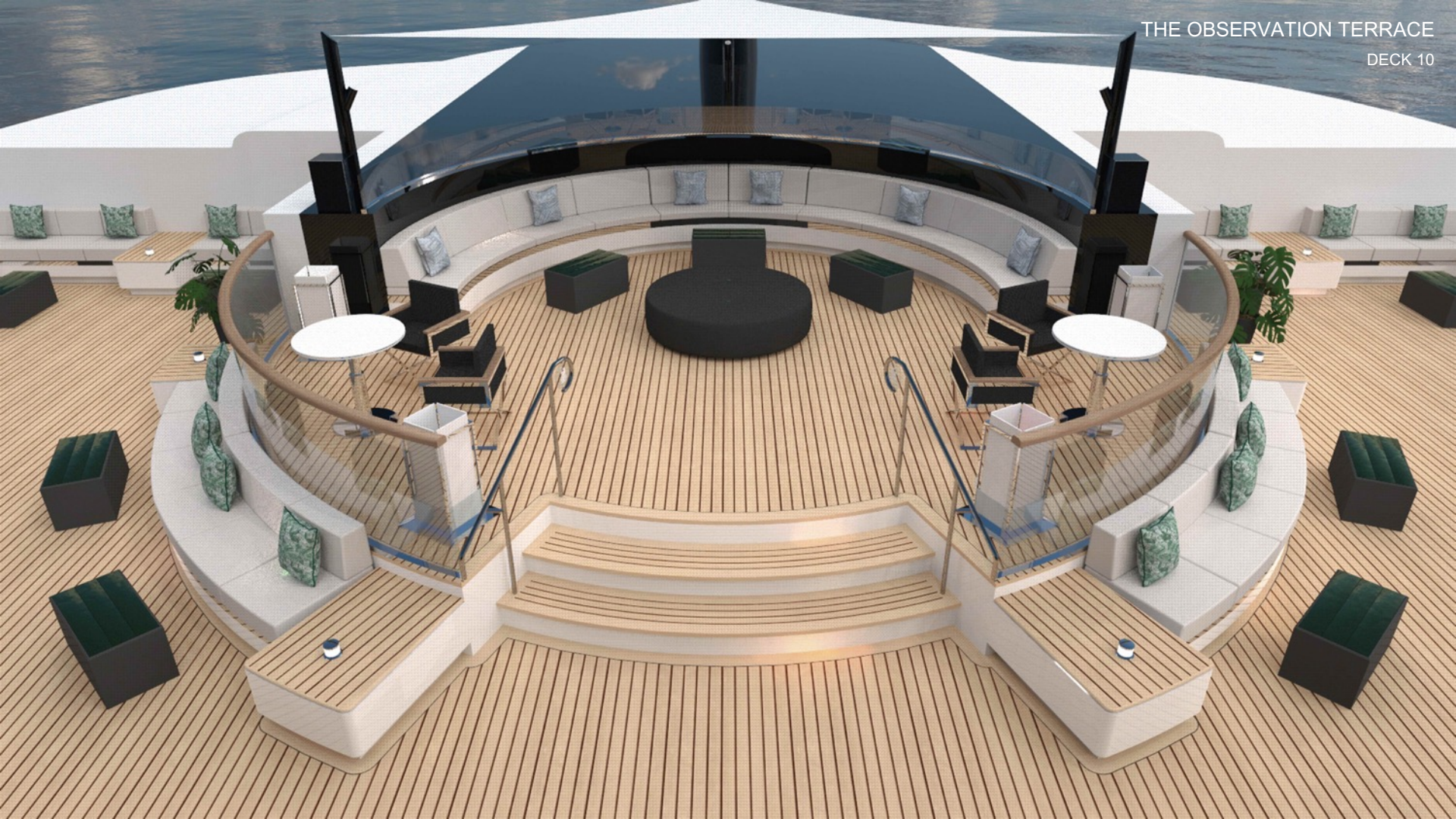
- INTIMATE, RELAXED, CASUALLY ELEGANT ATMOSPHERE
- INTUITIVE, RESIDENTIAL FEEL
- LOUNGE AND BAR OFFER A VARIETY OF ENTERTAINMENT EXPERIENCES
- ACTIVELY SOCIALIZE OR ENJOY PRIVACY
- PEACEFUL RETREAT BY DAY, SOCIAL SCENE BY NIGHT





THE OBSERVATION  
TERRACE  
DECK 10













# SPA AND WELLNESS

- SPA DESIGNED AND OPERATED BY THE RITZ-CARLTON®
- INDOOR AND OUTDOOR TREATMENT ROOMS AND RELAXATION AREAS
- BEAUTY LOUNGE AND GENTLEMEN'S GROOMING SALON
  
- TECHNOGYM EQUIPMENT
- GROUP EXERCISE CLASSES
- PERSONAL TRAINING
- FITNESS ON DEMAND



# THE RITZ-CARLTON SPA OFFERINGS

Guests can escape to their on personal oasis at The Ritz-Carlton Spa to indulge in the scents and delights from around the world while enjoying a relaxing massage or a nourishing facial.

## SPA SERVICES:

- Massages
- Facials (for both ladies and gentlemen)
- Skin Treatments
- Salon Services
- Barber Services



An indulgence in a moment,  
a moment of connection or solitude,  
an awakening or an escape: the spa  
experience offers something  
different for everyone. The Spa  
experience aboard The Ritz-Carlton  
Yacht Collection invites you to indulge  
in scents and delights from around the  
world. Inspired by the destinations we  
visit and captivated by your needs,  
our treatments, essential oils, serums,  
refresh the body and soothe the spirit.  
Aboard spa, they are with and with ease  
into relaxation aboard your vessel at sea.

## Spa Menu

  
THE RITZ-CARLTON  
YACHT COLLECTION

SPA

# FITNESS STUDIO OFFERINGS

In addition to the spa, the onboard Fitness Studio is home to a health and wellness program integrating fitness and spa with lectures and nutrition that can be customized to fit guests' needs.

## FITNESS STUDIO OFFERINGS:

- Personal Training
- Group Exercise Classes
- Private or Group Yoga Classes
- Fitness on Demand Access

















# RITZ KIDS

- FAMILIES EXPLORING THE WORLD TOGETHER ARE WELCOME ABOARD
- DEDICATED SPACE ON BOARD FOR CHILDREN AGES 4 TO 12
- ENHANCED SERVICES AVAILABLE DURING HOLIDAYS AND SUMMER MONTHS

MORNING SESSION: 9:00AM – 12:00PM \$45

AFTERNOON SESSION: 1:00PM – 4:00PM \$45

EVENING SESSION: 6:00PM – 9:00PM \$65



# RITZ KIDS PROGRAMMING



The Ritz Kids program is geared toward children from ages 4 to 12. Four key pillars are designed to inspire natural curiosity and creativity and to engage their senses.

**OCEANS & MARINE LIFE:** Examining our relationship with water and marine life while enlivening a natural curiosity into the underwater world of sea creatures

Sample activities: Water Cycle Craft, Create a Creature

**DESTINATIONS AND THEIR CULTURES:** Celebrating the cultures from around the world through art, music, theatre and play

Sample activities: Culture and Clay, Mystery Detective

**OCEAN STEWARDSHIP AND SAILING:** Shining a light on traditional and modern sailing practices including navigation, marine communication and ship stability

Sample activities: Destination Navigation Chart, Ropes and Knots

**ENVIRONMENTAL RESPONSIBILITY:** Promoting our role in the health of our planet for the future including sustainability, resource consumption and protecting our ecosystem

Sample activities: Water Sampling Science Experiment, Yacht Sustainability Systems

# RELAXED PACE



- MORE OVERNIGHTS IN PORTS OF CALL
- MOST VOYAGES RANGE 7-10 NIGHTS
- ABILITY TO COMBINE BACK-TO-BACK VOYAGES WITHOUT REPEATING PORTS
- INTIMATE SIZE ALLOWS ACCESS TO COVETED YACHTING DESTINATIONS

# THE SHORE COLLECTION



CURATED IMMERSIVE EXPERIENCES TO  
SUIT VARIOUS INTERESTS AND ACTIVITY  
LEVELS

- ICONIC SIGHTS
- STIRRING THE SENSES
- CULTURAL CONNECTIONS
- ACTIVE EXPLORATIONS
- EPICUREAN EXPERIENCES

CONCIERGE ASHORE FOR CUSTOM  
ARRANGEMENTS OR PRIVATE EXCURSIONS

# ENTERTAINMENT AND ENRICHMENT

- Led by the Entertainment & Enrichment Director, onboard entertainment staff will feature in-house quartet comprised of one pianist, one vocalist, one guitarist and one drum/sax musician.
- Partnerships with the local arts and music communities and discussions led by renowned experts and lecturers will bring local culture from shoreside to onboard.
- A detailed activities program will feature elements such as classic movies, themed dinners with curated entertainment and lectures and an educational and engaging Ritz Kids children's program.
- A global network of world-renowned entertainers and enrichment artists will join the yacht for specific sailings to suit the regions we visit.



# SPECIAL OCCASION PACKAGES

## **WEDDINGS AND VOW RENEWALS** - \$900 PER COUPLE / \$450 PER GUEST

Our Wedding and Vow Renewal package allows guests to celebrate their special day with loved ones while onboard, with a ceremony officiated by the captain\* and pre- and post- ceremony reception and toast.

This package includes lunch or dinner at our Michelin-inspired specialty restaurant or in our Dining Privéé, bouquets and boutonnieres for the bridal party, live music and a personalized cake.

## **CELEBRATIONS** - \$950 PER COUPLE

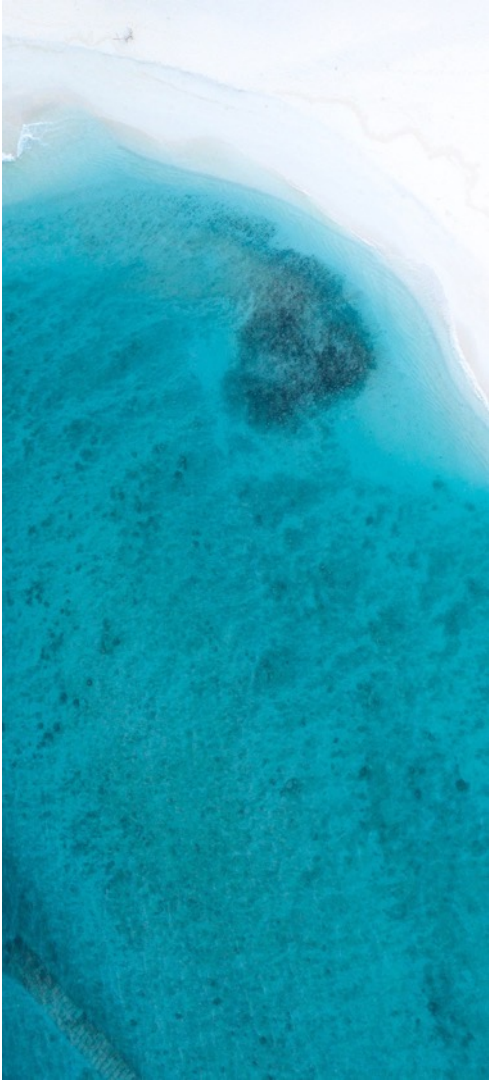
Couples traveling with us who are celebrating a special occasion such as an anniversary or honeymoon may purchase our Celebrations package which includes a bottle of champagne, special turndown amenities, a couple's massage at the onboard spa, and their choice of Epicurean Experience from The Shore Collection.

Packages can be booked 134 days prior to sailing.

For more information, please email [special.services@ritz-carltonyachtcollection.com](mailto:special.services@ritz-carltonyachtcollection.com)

\*The Ritz-Carlton Yacht Collection does not perform legally binding ceremonies on board.  
It is recommended for couples to hold a civil ceremony to ensure they meet local marriage law requirements.





# ITINERARIES



# 2022 VOYAGE CALENDAR

## 2022 SEASON HIGHLIGHTS

ADRIATIC COAST | AMALFI COAST | AZORES | BALEARIC ISLANDS  
CARIBBEAN ISLANDS | GREEK ISLES | WINDWARD ISLANDS



### MEDITERRANEAN

DATE	NIGHTS	ITINERARY
AUG 6	7	ATHENS TO ATHENS
AUG 13	7	ATHENS TO ISTANBUL
AUG 20	11	ISTANBUL TO ATHENS
AUG 31	10	ATHENS TO VENICE
SEP 10	7	VENICE TO ROME
SEP 22	9	ROME TO ROME
OCT 1	7	ROME TO ROME
OCT 8	7	ROME TO BARCELONA
OCT 15	7	BARCELONA TO NICE
OCT 22	7	NICE TO BARCELONA
OCT 29	7	BARCELONA TO LISBON

### CARIBBEAN

DATE	NIGHTS	ITINERARY
NOV 5	11	LISBON TO BARBADOS
NOV 17	5	BARBADOS TO BARBADOS
NOV 22	5	BARBADOS TO ST. MAARTEN
NOV 27	7	ST. MAARTEN TO BARBADOS
DEC 4	7	BARBADOS TO ST. MAARTEN
DEC 11	7	ST. MAARTEN TO SAN JUAN
DEC 18	10	SAN JUAN TO SAN JUAN
DEC 28	7	SAN JUAN TO BARBADOS



# 2023 VOYAGE CALENDAR

## CENTRAL AMERICA

DATE	NIGHTS	ITINERARY
JAN 4	10	BARBADOS TO PANAMA CITY
JAN 14	7	PANAMA CITY TO PUERTO CALDERA
JAN 21	7	PUERTO CALDERA TO PUERTO CALDERA
JAN 28	7	PUERTO CALDERA TO PANAMA CITY
FEB 4	10	PANAMA CITY TO FORT LAUDERDALE



## CARIBBEAN

DATE	NIGHTS	ITINERARY
FEB 14	7	FORT LAUDERDALE TO FORT LAUDERDALE
FEB 21	7	FORT LAUDERDALE TO FORT LAUDERDALE
FEB 28	5	FORT LAUDERDALE TO FORT LAUDERDALE
MAR 5	7	FORT LAUDERDALE TO SAN JUAN
MAR 12	7	SAN JUAN TO BARBADOS
MAR 19	7	BARBADOS TO BARBADOS
MAR 26	7	BARBADOS TO SAN JUAN
APR 2	5	SAN JUAN TO SAN JUAN
APR 7	7	SAN JUAN TO SAN JUAN
APR 14	13	SAN JUAN TO LISBON
NOV 19	7	BARBADOS TO BARBADOS
NOV 26	7	BARBADOS TO ARUBA
DEC 3	10	ARUBA TO FORT LAUDERDALE
DEC 13	7	FORT LAUDERDALE TO FORT LAUDERDALE
DEC 20	7	FORT LAUDERDALE TO FORT LAUDERDALE
DEC 27	7	FORT LAUDERDALE TO SAN JUAN

## MEDITERRANEAN

DATE	NIGHTS	ITINERARY
APR 27	10	LISBON TO BARCELONA
MAY 7	10	BARCELONA TO ROME
MAY 17	7	ROME TO MARSEILLE
MAY 31	10	ROME TO VENICE
JUN 24	7	ATHENS TO VALLETTA
JUL 1	7	VALLETTA TO ROME
JUL 8	7	ROME TO NICE
JUL 15	7	NICE TO BARCELONA
JUL 22	11	BARCELONA TO ROME
AUG 2	10	ROME TO VENICE
AUG 12	7	VENICE TO DUBROVNIK
AUG 24	9	VENICE TO ATHENS
SEP 2	7	ATHENS TO ATHENS
SEP 9	7	ATHENS TO ISTANBUL
SEP 16	11	ISTANBUL TO ATHENS
SEP 27	7	ATHENS TO ATHENS
OCT 4	11	ATHENS TO ROME
OCT 15	7	ROME TO BARCELONA
OCT 22	9	BARCELONA TO TENERIFE
OCT 31	7	TENERIFE TO TENERIFE
NOV 7	12	TENERIFE TO BARBADOS

# 2024 VOYAGE CALENDAR

## 2024 HIGHLIGHTS

CARIBBEAN ISLANDS

WINDWARD ISLANDS

JAMAICA

CAYMAN ISLANDS

BERMUDA

AZORES

## CARIBBEAN

DATE	NIGHTS	ITINERARY
JAN 3	7	SAN JUAN TO BARBADOS
JAN 10	7	BARBADOS TO BARBADOS
JAN 17	7	BARBADOS TO BARBADOS
FEB 9	8	SAN JUAN TO SAN JUAN
FEB 17	5	SAN JUAN TO BARBADOS
FEB 24	7	BARBADOS TO BARBADOS
MAR 2	7	BARBADOS TO ARUBA
MAR 9	7	ARUBA TO SAN JUAN
MAR 16	7	SAN JUAN TO SAN JUAN
MAR 28	7	SAN JUAN TO BERMUDA
APR 4	11	BERMUDA TO LISBON



# INTRODUCING THE NEXT GENERATION



Two new superyachts setting sail in 2024 and 2025

## *Ilma*

Origin: Maltese

Meaning: Water

Reservations to open fall 2022

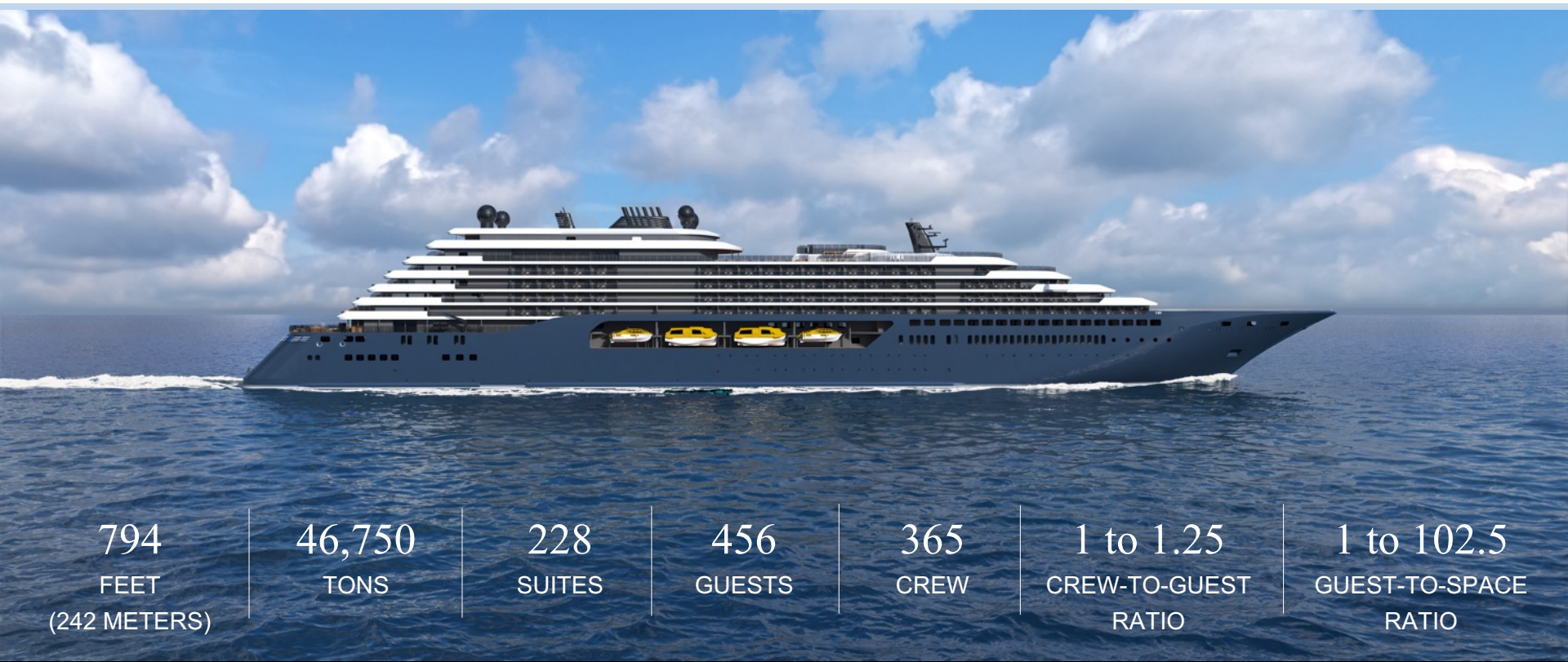
## *Luminara*

Origin: Spanish

Meaning: Child of the stars

Signature spaces include multiple dining experiences, a wine vault, a Ritz-Carlton Spa and an expanded marina with direct access to the sea. With an enhanced focus on sustainability, the superyachts will be designed with advanced environmental features and technologies to minimize ecological impact.

# YACHT SPECIFICATIONS



794  
FEET  
(242 METERS)

46,750  
TONS

228  
SUITES

456  
GUESTS

365  
CREW

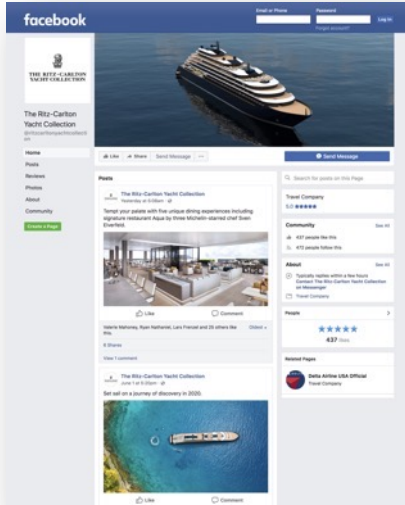
1 to 1.25  
CREW-TO-GUEST  
RATIO

1 to 102.5  
GUEST-TO-SPACE  
RATIO

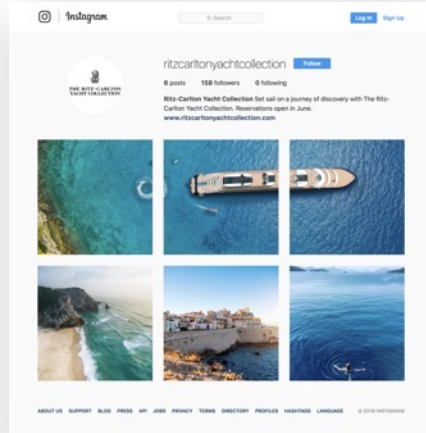
# FOLLOW US ON SOCIAL



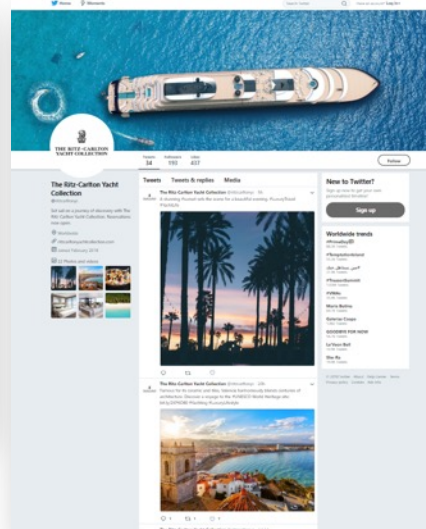
@ritzcarltonyachtcollection



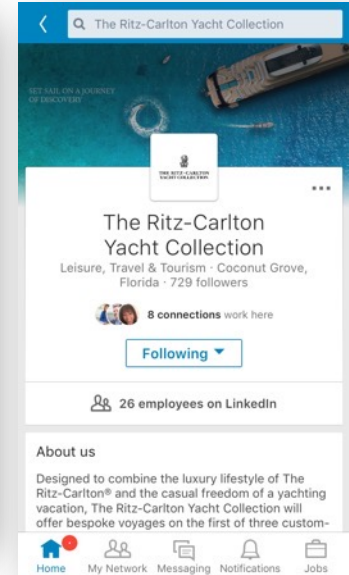
@ritzcarltonyachtcollection



@ritzcarltonyc



The Ritz-Carlton Yacht Collection





THANK YOU